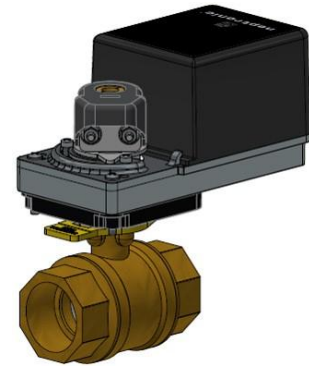


Models

CPAxxxxYS1: 2-way, 1/2" (DN15), standard NPT
 CPBxxxxYS1: 2-way, 3/4" (DN20), standard NPT
 CPCxxxxYS1: 2-way, 1" (DN25), standard NPT
 CPDxxxxYS1: 2-way, 1-1/4" (DN32), standard NPT
 CPExxxxYS1: 2-way, 1-1/2" (DN40), standard NPT
 CPFxxxxYS1: 2-way, 2" (DN50), standard NPT
 CPGxxxxYS1: 2-way, 2-1/2" (DN65), standard NPT
 CPHxxxxYS1: 2-way, 3" (DN80), standard NPT



With B Series Actuators

Features

- 2-way valves available in 1/2" (DN15), 3/4" (DN20), 1" (DN25), 1 1/4" (DN32), 1 1/2" (DN40), 2" (DN50), 2 1/2" (DN65) and 3" (DN80)
- Compatible with Neptronic B series (50 in.lb [5.6 Nm]) actuators
- Close-off pressure of 100-130psig
- Small dimensions allow for easier installation
- Cv range from 0.4 to 124 (Kv 0.3 to 107)
- 2 Way control of hot water or chilled water up to 50%Glycol
- Brass body with stainless steel ball

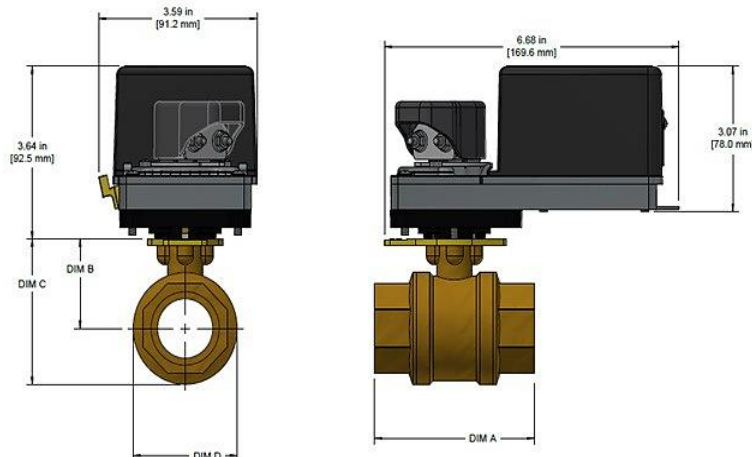
Models

Size	2-Way Models	Cv	Kv	Close Off PSI
1/2" [DN15]	CP A0004YS1	0.4	0.3	130
	CP A0007YS1	0.7	0.6	130
	CP A0014YS1	1.4	1.2	130
	CP A0026YS1	2.6	2.2	130
	CP A0050YS1	5.0	4.0	130
3/4" [DN20]	CP B0100YS1	10.0	8.0	130
1" [DN25]	CP C0160YS1	16.0	13.0	100
1-1/4" [DN32]	CP D0260YS1	26.0	22.0	100
1-1/2" [DN40]	CP E0410YS1	41.0	35.0	100
2" [DN50]	CP F0710YS1	71.0	61.0	100
2- 1/2" [DN65]	CP G1010YS1	101.0	87.0	100
3" [DN80]	CP H1240YS1	124.0	107.0	100

Technical Data

Specification		All Models
Actuator Compatibility		All Neptronic B series actuators
Sizes		1/2" to 3" [DN15 to DN80]
Range Cv [Kv]		0.4 to 124 [0.3 to 107]
Static Pressure and Temperature		360 PSI, -22°F to +250°F (-30°C to +121°C)
Pressure	Close-Off	100 PSIG Maximum (130 PSIG max. for 1/2" and 3/4")
	Differential	35 PSIG Maximum
Materials	Body	Forged Brass ASTM B283
	Ball and Stem	Stainless Steel
	Seats	Reinforced Teflon Seals with EPDM "O" Rings
Flow Contoured Insert		Glass Filled Polymer
Stem Seals		EPDM
End Connections		Standard NPT

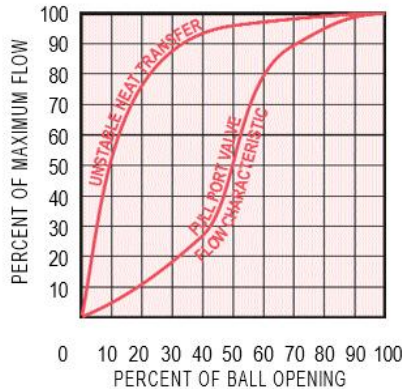
Dimensions



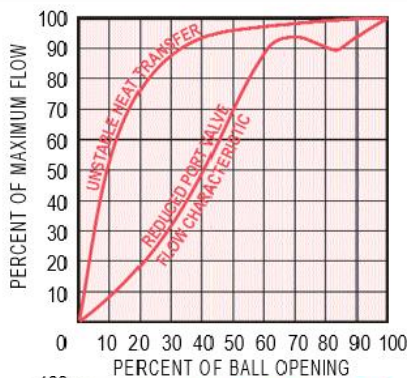
Valve Size	1/2" [DN15]	3/4" [DN20]	1" [DN25]	1-1/4" [DN32]	1-1/2" [DN40]	2" [DN50]	2-1/2" [DN65]	3" [DN80]
A	2.37" [60mm]	2.76" [70mm]	3.04" [77mm]	3.62" [92mm]	4.06" [103mm]	4.90" [125mm]	5.35" [136mm]	5.73" [146mm]
B	1.33" [34mm]	1.47" [37mm]	1.67" [42mm]	1.89" [48mm]	2.22" [56mm]	2.51" [64mm]	2.51" [64mm]	2.51" [64mm]
C	1.94" [49mm]	2.23" [57mm]	2.57" [65mm]	3.07" [80mm]	3.63" [92mm]	4.26" [108mm]	4.26" [108mm]	4.52" [115mm]
D	1.71" [43mm]	1.71" [43mm]	1.81" [46mm]	2.36" [60mm]	2.83" [72mm]	3.50" [89mm]	3.50" [89mm]	4.02" [102mm]

Note: These dimensions depend on the supplier and can be changed without any warning.

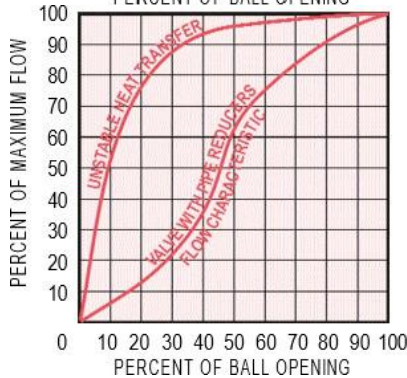
Benefits of Contoured Port Valves



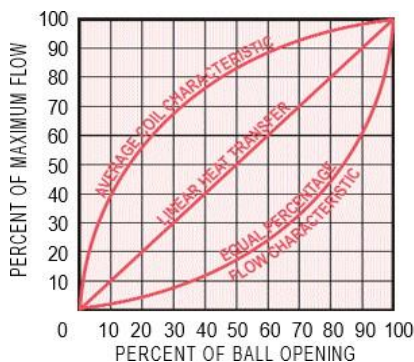
The large Cv rating of FULL PORT VALVES is caused by the shape and size of the orifice and results in a distorted flow characteristic, an unstable heat transfer and an “all or nothing” flow. The valve opens quickly and has an exceedingly small pressure drop. This is used for 2 position control where a low-pressure drop is desirable. It is not recommended for proportional control.



Using the REDUCED PORT VALVE results in a smaller opening through the ball and gives a smaller Cv with a higher-pressure differential yet the flow characteristic is still distorted. A stable control under these conditions will be difficult to achieve.



PIPE REDUCERS reduce the Cv due to the piping geometry, but this also distorts the characteristic. As in the full and reduced port ball valves, pipe reducers cause unstable heat output that increases far too quickly as the valve opens.



The NEPTRONIC SOLUTION is the CONTOURED PORT BALL VALVE. The characterized “V” style port allows for a more gradual equal percentage curve that is controllable for the full stroke of the valve. This results in a high rangeability and a greater turn down ratio for more accurate flow control.

As you can see in the graph on the left, the equal percentage characteristic of the CONTOURED PORT BALL VALVE mirrors the average coil characteristic resulting in linear heat transfer.



Recycling at end of life: please return this product to your Neptronic local distributor for recycling. If you need to find the nearest Neptronic authorized distributor, please consult www.neptronic.com.